

GRAND AVENUE OFFICE SPACE FOR LEASE



3608 GRAND AVENUE ~ OAKLAND, CALIFORNIA

- Available:** ±1,470 square feet (divisible to 295 square feet)
- Comments:**
- ~ Second floor walkup
 - ~ Efficient floor plan
 - ~ Great window line (entire front of second floor)
 - ~ On-site parking available
 - ~ Excellent location, near Piedmont & Interstate 580
- Rent:** \$1.75 per square foot, fully serviced

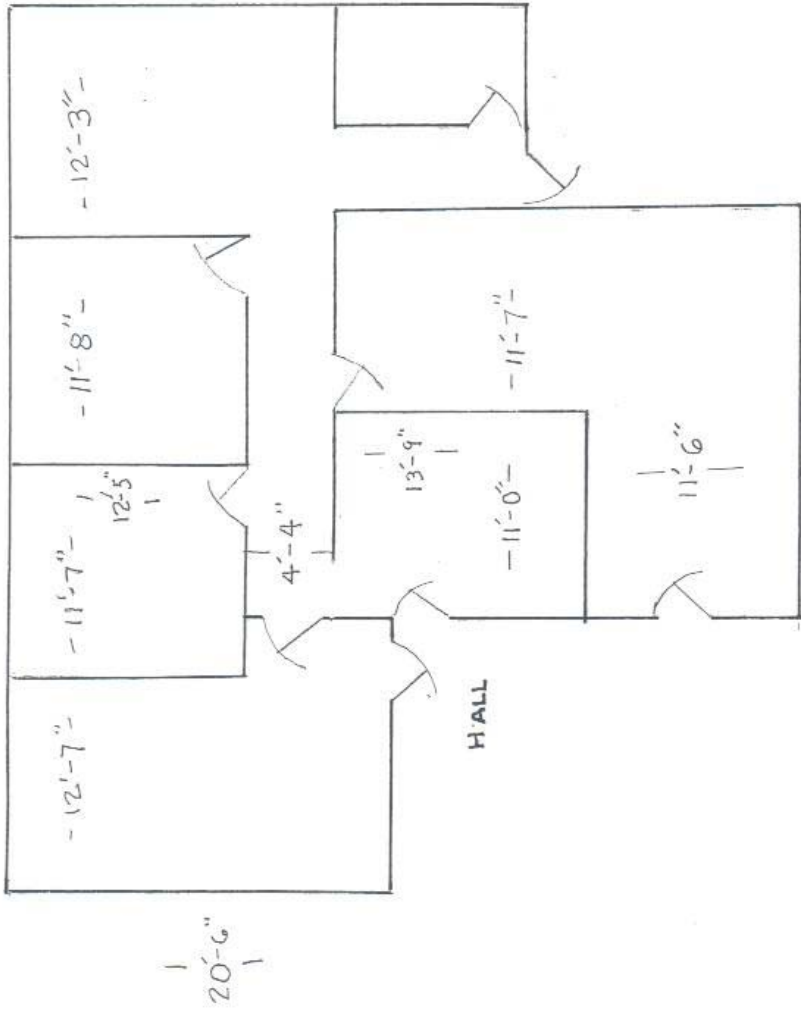
05/07/09

**For Further Information, Contact Exclusive Agents:
DAN FICHTE ~ RYAN DALTON ~ 510-763-7016**



388 SEVENTEENTH STREET, SUITE 200, OAKLAND, CALIFORNIA 94612
PHONE 510-763-7016 | FAX 510-763-7763

GRAND AVENUE



SUITES 2014202
3608 GRAND
1,470 RSF