

RETAIL SPACE FOR LEASE



PLAZA 360 **360 TWENTY-SECOND STREET** **OAKLAND, CALIFORNIA**

Available: 6,178 rentable square feet, divisible to $\pm 1,500$ square feet

Comments: ~ 1st floor space, good for retail or office
~ 79 feet of street frontage
~ Well located building, in the Lake Merritt Financial District & close to BART and AC Transit lines

Rent: \$1.50-\$2.00 per square foot, triple net

03/24/10

For Further Information, Contact Exclusive Agents:

STEVE BANKER ~ DRE License #00577218

RYAN DALTON ~ DRE License #01809447

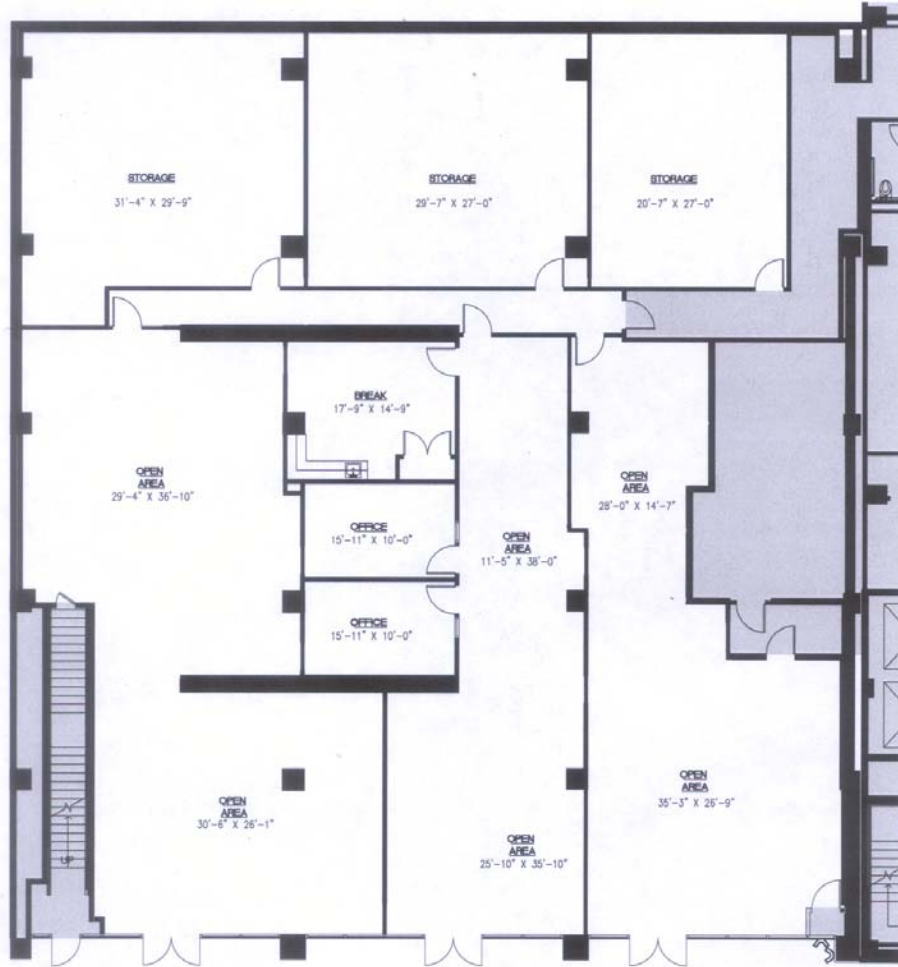
510-763-7016



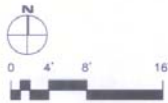
388 SEVENTEENTH STREET, SUITE 200, OAKLAND, CALIFORNIA 94612
PHONE 510-763-7016 | FAX 510-763-7763

PLAZA
360
22ND STREET |

RMW
architecture & interiors
vision
function
space
culture
ideas
experience
think
listen
build
speak
learn



GROUND FLOOR RETAIL



PLAZA 360
360 22ND STREET
OAKLAND, CA

