

KAISER BUILDING ~ RETAIL SPACE FOR LEASE



300 LAKESIDE DRIVE ~ SUITE 120 OAKLAND, CALIFORNIA

Available: 4,332 square feet, divisible to \pm 2,150 square feet

Comments:

- ~ Located in the 872,000 square foot Kaiser Center complex
- ~ Bank of America & the United States Post Office are located in the building;
- Longs Drugs, Togo's, US Bank, Alliant Credit Union, & 24-Hour Fitness are located in the project
- ~ FedEx Kinko's is vacating 04/30/09
- ~ Validated parking is available
- ~ Space is adaptable to retail, service, or office use

Rent: \$2.00 per square foot per month, triple net

03/24/10

For Further Information, Contact Exclusive Agents:

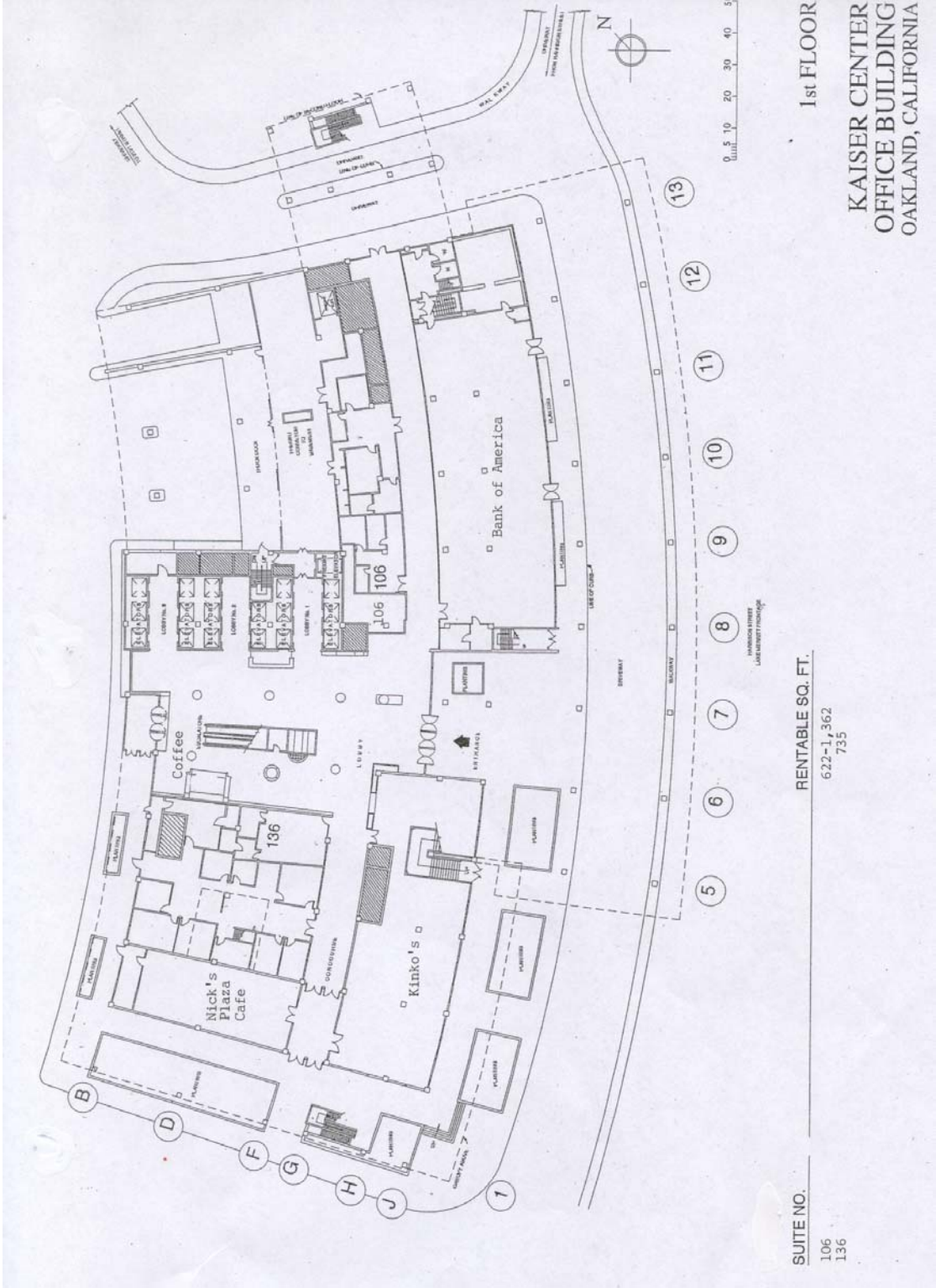
STEVE BANKER
DRE License #00577218

510-763-7016

DAN FICHTE
DRE License #00816685



388 SEVENTEENTH STREET, SUITE 200, OAKLAND, CALIFORNIA 94612
PHONE 510-763-7016 | FAX 510-763-7763



1st FLOOR
**KAISER CENTER
 OFFICE BUILDING**
 OAKLAND, CALIFORNIA

SUITE NO.
 106
 136

RENTABLE SQ. FT.
 6,221,362
 735