

OFFICE SPACE FOR LEASE



1133 SEVENTH STREET ~ OAKLAND, CALIFORNIA

- Location:**
- At the corner of Adeline Street
 - 3 blocks to BART
 - 1/4 mile to I-80 on-ramp
 - Near the Port of Oakland & Jack London Square
- Size:**
- 5,200 rentable square feet
 - Divisible to 2,600 square feet
- Features:**
- Up to 11 free on-site parking spaces in the adjacent fenced lot (electronic entry)
 - Server room with dedicated AC
 - Category 6 cabling distributed throughout the space
 - Additional free parking in the adjacent CalTrans lot
- Available:** Now
- Lease Rate:** \$0.80-\$0.85/square foot, industrial gross

See next page for floor plan.

08/10/10

For Further Information, Contact Exclusive Agents:

STEVE BANKER · DRE Lic. #00577218 · 510-763-7016 · sbanker@lcbassociates.com
KEN SUTHERLAND · DRE Lic. #00365276 · 510-893-0772 · kensutherland@thesutherlandco.com

THE ABOVE INFORMATION HAS BEEN OBTAINED FROM SOURCES BELIEVED TO BE RELIABLE, BUT LCB ASSOCIATES HAS NOT VERIFIED, NOR HAS ANY KNOWLEDGE REGARDING THE ACCURACY OR COMPLETENESS OF THE INFORMATION, AND MAKES NO WARRANTY CONCERNING SAME. THEREFORE, LCB ASSOCIATES DISCLAIMS ALL LIABILITIES IN CONNECTION WITH ANY INACCURACIES OR INCOMPLETENESS.

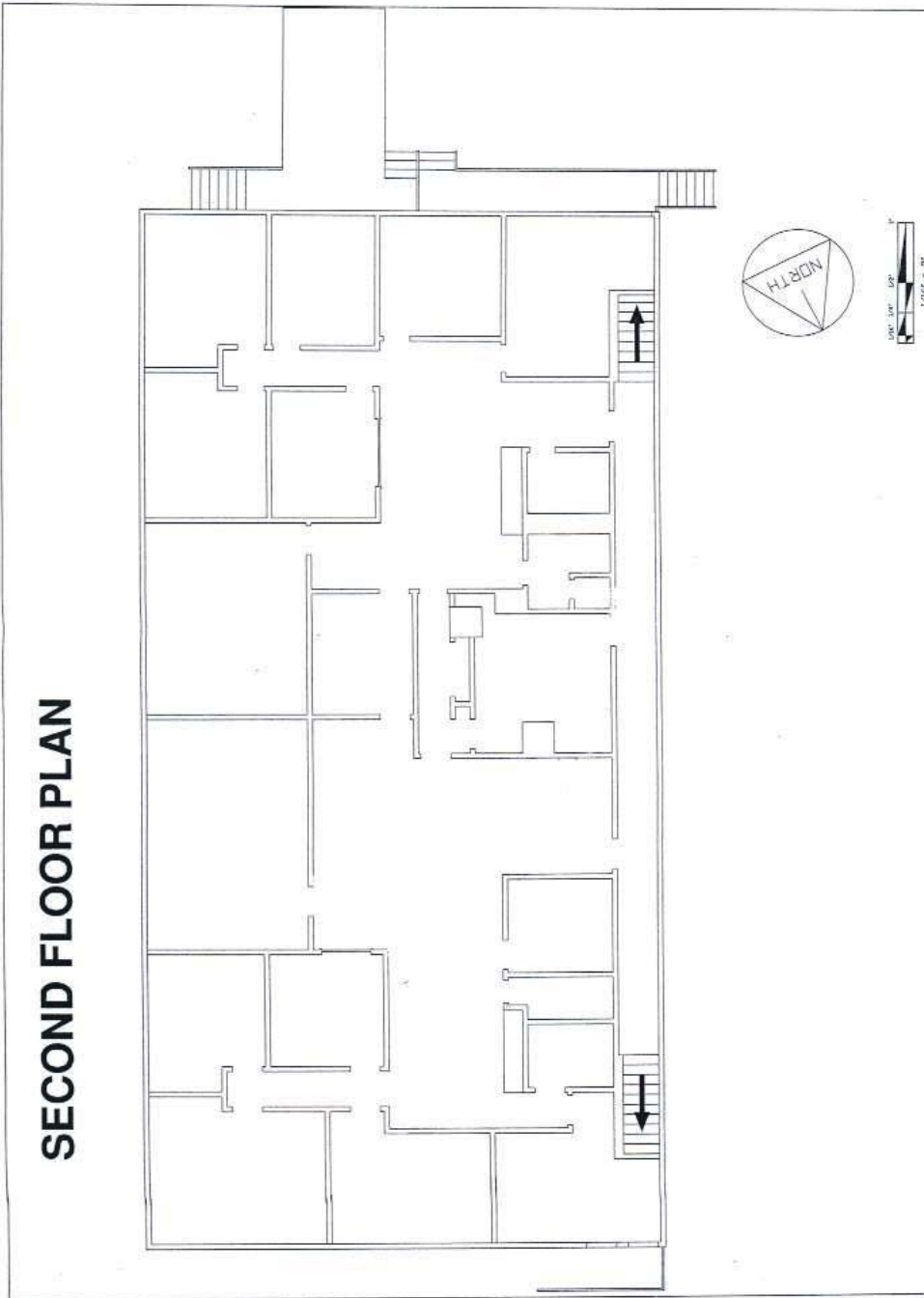


388 Seventeenth Street, Oakland, California 94612 · 510-763-7016 · 510-763-7763 fax · www.lcbassociates.com



417 Fourth Street, Oakland, California 94607 · 510-893-0772 · 510-893-4063 fax · www.thesutherlandco.com

SECOND FLOOR PLAN



THE ABOVE INFORMATION HAS BEEN OBTAINED FROM SOURCES BELIEVED TO BE RELIABLE, BUT LCB ASSOCIATES HAS NOT VERIFIED, NOR HAS ANY KNOWLEDGE REGARDING THE ACCURACY OR COMPLETENESS OF THE INFORMATION, AND MAKES NO WARRANTY CONCERNING SAME. THEREFORE, LCB ASSOCIATES DISCLAIMS ALL LIABILITIES IN CONNECTION WITH ANY INACCURACIES OR INCOMPLETENESS.



388 Seventeenth Street, Oakland, California 94612 · 510-763-7016 · 510-763-7763 fax · www.lcbassociates.com



417 Fourth Street, Oakland, California 94607 · 510-893-0772 · 510-893-4063 fax · www.thesutherlandco.com